

**Produkt Datenblatt**

Gerätebezeichnung: RAV-RM561BTP-E

**Technische Daten**

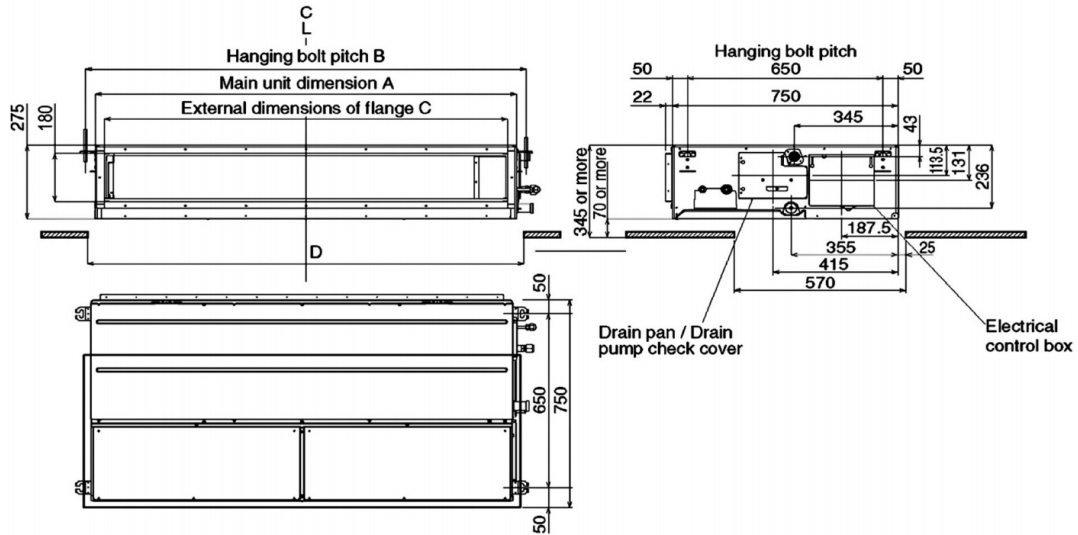
	<b>Einheiten</b>	<b>Werte</b>
Luftvolumenstrom (h/n) C/H	m <sup>3</sup> /h	800/480
Schalldruckpegel (h/n) C/H	dB (A)	33 / 25
Schalleistungspegel (h/n) C/H	dB (A)	48 / 40
Externe Pressung	Pa	30 / 120
Bördelanschlüsse FL	mm	6,4
Bördelanschlüsse Gas	mm	12,7
Abmessungen (HxBxT)	mm	275 x 700 x 750
Gewicht	kg	23

**Abbildung:**



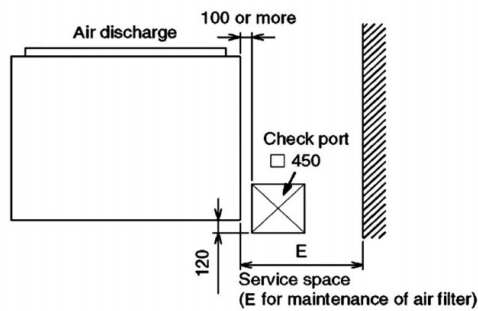
# Maßskizze:

RAV-RM561BTP\* RAV-RM801BTP\* RAV-RM1101BTP\* RAV-RM1401BTP\*



## Dimension

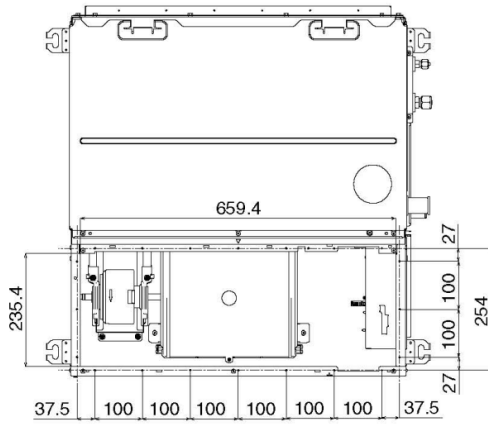
	A	B	C	D
RM56 type	700	765	640	750
RM80 type	1000	1065	940	1050
RM110, 140 type	1400	1465	1340	1450



	E
RM56 type	700
RM80 type	500
RM110, 140 type	700

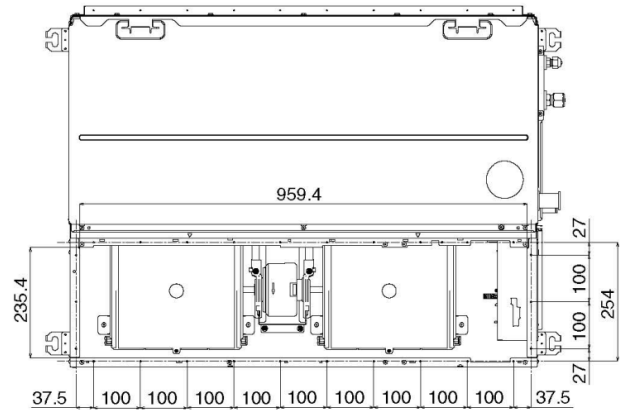
**RM56 type**

<Under air intake>

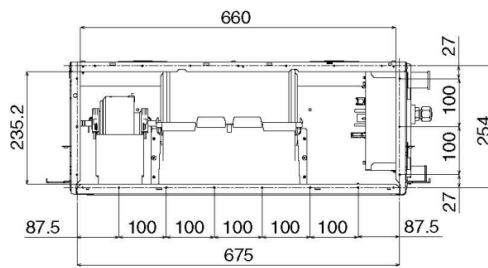


**RM80 type**

<Under air intake>



<Back air intake>



<Back air intake>

